



西安交通大学
XI'AN JIAOTONG UNIVERSITY

INTERNATIONAL EDUCATION

XI'AN JIAOTONG UNIVERSITY

XI'AN CHINA
2024-2025



TABLE OF CONTENTS

01 INTRODUCTION TO XJTU

03 DEGREE PROGRAMS

English-taught Programs

1. Bachelor's Programs
2. Master's Programs
3. Doctoral Programs

Chinese-taught Programs

1. Bachelor's Programs
2. Master's Programs
3. Doctoral Programs

17 NON-DEGREE PROGRAMS

Chinese Language Program

Visiting Scholar Program

Exchanging Students Program

International Foundation Program

Summer Schools

20 SCHOLARSHIPS

Chinese Government Scholarships

MOFCOM Scholarship

International Chinese Language Teachers Scholarship

XJTU-Xi'an City Government Belt & Road Scholarship

XJTU Siyuan International Student Scholarship

XI'AN—UCLG ASPAC Scholarship

Other Scholarships

27 FEES

Accommodation Fee

31 CAMPUS LIFE

Study at XJTU

Life in Xi'an

34 APPLICATION INFORMATION

Application Procedure

Documents and Time Schedule

37 CONTACT US

INTRODUCTION TO XJTU

Xi'an Jiaotong University (XJTU), is the national key University directly administered by the Ministry of Education of China. It is the top 10 Research University in China and member of China's Ivy League --- C9 League. It was ranked **No. 10 on the list of 2023 Shanghai Ranking of Chinese Mainland**.

XJTU is a comprehensive research university with 11 major categories of disciplines: science, engineering, medicine, economics, management, humanities, law, philosophy, art, education, and interdisciplinary, and 32 schools, 9 colleges for undergraduates and 3 affiliated hospitals. There are four campuses, namely Xingqing campus, Yanta campus, Qujiang campus and China Western Science and Technology Innovation Harbour, with a total area of about 5.33 million square meters

The University now has 54,760 full-time students, including 22,407 undergraduates, 29,285 postgraduates, and 3068 international students. XJTU offers 76 undergraduate majors, and there are 36 first-level disciplines authorized to confer doctorate degrees, and 43 disciplines authorized to confer master's degrees.

According to the data released by Essential Science Indicators (ESI), **Engineering programs of XJTU are ranked top 1‰ on the ESI list**, other 17 disciplines of XJTU are ranked top 1% and 5 disciplines of XJTU are ranked top 1‰ on the ESI list in 2023. Its **Management School** and **Law School are accredited for the QS FIVE STARS**. XJTU offers undergraduate, master's, doctoral, and visiting scholar programs in its advantageous disciplines and enrolled international students from all over the world.

XJTU established extensive international communication ties with about 300 universities and research institutions from 44 countries and regions. It initiated the **University Alliance of the Silk Road** and built an international platform of educational cooperation and communication for more than 160 universities of 37 countries and regions.

Adhering to the principle of Chinese characteristics and striving to be the world-class, XJTU is committed to cultivating outstanding talents who advocate science, seek for innovation, and have a strong sense of responsibility and global vision. As of 2023, there were a total of 3,068 international students from 130 countries studying in XJTU, among whom 2,906 were degree-pursuing students, including 1,142 undergraduates, 863 masters and 901 doctoral students. Due to its outstanding education quality, the University was awarded by the Ministry of Education of China as the **"Demonstration Base for International Education"**.

The University is located in Xi'an—the geographical center of China, the starting city of Silk Road as well as the capitals of 13 dynasties in Chinese history. It is not only home to Terra Cotta Warriors and Horses and Huashan Mountain but also home to more than 100 world top 500 companies' branches. It is a hub of AI, aerospace, biotechnology, photoelectric chip, information technology, new materials, new energy, intelligent manufacturing etc. Its brilliant History, glorious culture, high-end technology and friendly environment for realizing the dreams bring Xi'an into one of the most selected destinations for study in China.



WELCOME TO APPLY FOR XJTU!

School Motto:
Diligent in Study, Persistent in Ambition,
Determined in Action, Competent in Work



DEGREE PROGRAMS

English-taught Programs

XJTU initiated undergraduate medical education for international students in English in China. In other advantageous disciplines, the university also offers special Chinese-taught education programs for international undergraduate students, including: International Economics and Trade, Chinese Language (Business Chinese), Mechanical Engineering (Intelligent Manufacturing), Big Data Management and Application, Public Administration (Electronic Government), and Computer Science and Technology.

1. Bachelor's Programs

School/Center	Program	Teaching Language	Duration	Type of degree awarded
Health Science Center	MBBS	English	6 years	Bachelor of Medicine
	BDS	English	6 years	Bachelor of Medicine

2. Master's Programs

School/Faculty	Program	Teaching Language	Duration	Type of degree awarded
School of Materials Science and Engineering	Materials Science and Engineering	English	3 years	Master of Engineering
School of Electrical Engineering	Electrical Engineering	English	2 years	Master of Engineering
Faculty of Electronic and Information Engineering, School of Electronic Science and Engineering	Electronic Science and Technology	English	2 years	Master of Engineering
Faculty of Electronic and Information Engineering, School of Computer Science and Technology	Computer Science and Technology	English	2 years	Master of Engineering
Faculty of Electronic and Information Engineering, School of Information and Communications Engineering	Information and Communications Engineering	English	2 years	Master of Engineering
School of Law	Law (Master of Laws in Chinese and International Business Law)	English	2 years	Master of Law
School of Public Policy and Administration	Public Administration	English	3 years	Master of Management
School of Management	Management Science and Engineering Business Administration	English	2 years	Master of Management
		English	2 years	Master of Management
School of Aerospace Engineering	Mechanics Aeronautical and Astronautical Science and Technology	English	3 years	Master of Engineering
		English	3 years	Master of Engineering
School of Chemical Engineering and Technology	Chemical Engineering and Technology Power Engineering and Engineering Thermophysics	English	3 years	Master of Engineering
		English	3 years	Master of Engineering
School of Mechanical Engineering	Mechanical Engineering	English	2 years	Master of Engineering
Jinhe Center for Economics Research	Theoretical Economics Applied Economics	English	3 years	Master of Economics
		English	3 years	Master of Economics

School/Faculty	Program	Teaching Language	Duration	Type of degree awarded
School of Finance and Economics	Applied Economics	English	2 years	Master of Economics
	Theoretical Economics	English	2 years	Master of Economics
School of Marxism	Marxist Theory	English	2 years	Master of Law
School of Energy and Power Engineering	Power Engineering and Engineering Thermophysics	English	2 years	Master of Engineering
	Nuclear Science and Technology	English	2 years	Master of Engineering
	Environmental Science and Engineering	English	2 years	Master of Engineering
School of Humanities and Social Science	Journalism and Communication (Chinese Cultural Studies)	English	2 years	Master of Arts
School of Life Science and Technology	Biomedical Engineering	English	3 years	Master of Engineering
	Biology	English	3 years	Master of Science
School of Foreign Studies	Foreign Languages and Literatures	English	3 years	Master of Arts
	International Chinese Language Education	English	3 years	Master of Arts
School of Basic Medical, Health Science Center	Physiology	English	3 years	Master of Medicine
	Biochemistry and molecule biology	English	3 years	Master of Medicine
	Biophysics	English	3 years	Master of Medicine
	Pathophysiology	English	3 years	Master of Medicine
School of Public Health	Epidemiology and Health Statistics	English	3 years	Master of Medicine
	Child, Adolescent and Maternal Health	English	3 years	Master of Medicine
	Nutrition and Food Hygiene	English	3 years	Master of Medicine
	Public Health	English	3 years	Master of Medicine
School of Pharmacy, Health Science Center	Medicinal Chemistry	English	3 years	Master of Medicine
	Pharmaceutics	English	3 years	Master of Medicine
	Pharmacognosy	English	3 years	Master of Medicine
	Pharmaceutical Analysis	English	3 years	Master of Medicine
	Pharmacology	English	3 years	Master of Medicine
	Natural Medicinal Chemistry	English	3 years	Master of Medicine
	Pharmacy Administration	English	3 years	Master of Medicine
School of Forensic Medicine, Health Science Center	Forensic Medicine	English	3 years	Master of Medicine
School of Nursing, Health Science Center	Nursing	English	3 years	Master of Medicine

School/Faculty	Program	Teaching Language	Duration	Type of degree awarded
The First Affiliated Hospital of Xi'an Jiaotong University	Pharmaceutical Engineering (Professional degree)	English	3 years	Master of Medicine
	Internal Medicine (Professional degree)	English	3 years	Master of Medicine
	Pediatrics (Professional degree)	English	3 years	Master of Medicine
	Geriatric Medicine (Professional degree)	English	3 years	Master of Medicine
	Neurology (Professional degree)	English	3 years	Master of Medicine
	Dermatology and Venereology (Professional degree)	English	3 years	Master of Medicine
	Emergency Medicine (Professional degree)	English	3 years	Master of Medicine
	Critical Care Medicine (Professional degree)	English	3 years	Master of Medicine
	General Medical (Professional degree)	English	3 years	Master of Medicine
	Surgery (Professional degree)	English	3 years	Master of Medicine
	Rehabilitation and Physiotherapy (Professional degree)	English	3 years	Master of Medicine
	Orthopaedics and tranmstology (Professional degree)	English	3 years	Master of Medicine
	Obstetrics and Gynecology (Professional degree)	English	3 years	Master of Medicine
	Ophthalmology (Professional degree)	English	3 years	Master of Medicine
	Otorhinolaryngology (Professional degree)	English	3 years	Master of Medicine
	Anesthesiology (Professional degree)	English	3 years	Master of Medicine
	Clinicopathology (Professional degree)	English	3 years	Master of Medicine
	Clinical Laboratory Diagnostics (Professional degree)	English	3 years	Master of Medicine
	Oncology (Professional degree)	English	3 years	Master of Medicine
	Radiation Oncology (Professional degree)	English	3 years	Master of Medicine

School/Faculty	Program	Teaching Language	Duration	Type of degree awarded
	Radiographic (Professional degree)	English	3 years	Master of Medicine
	Ultrasonic Medicine (Professional degree)	English	3 years	Master of Medicine
	Nuclear Medicine (Professional degree)	English	3 years	Master of Medicine
	Stomatological Medicine (Professional degree)	English	3 years	Master of Medicine
	Public Health (Professional degree)	English	3 years	Master of Medicine
	Nursing (Professional degree)	English	3 years	Master of Medicine
	Pharmacy (Professional degree)	English	3 years	Master of Medicine
Hospital of Stomatology	Stomatological Medicine (Professional degree)	English	3 years	Master of Medicine
The Second Affiliated Hospital of Xi'an Jiaotong University	Internal Medicine (Professional degree)	English	3 years	Master of Medicine
	Pediatrics (Professional degree)	English	3 years	Master of Medicine
	Geriatric Medicine (Professional degree)	English	3 years	Master of Medicine
	Dermatology and Venereology (Professional degree)	English	3 years	Master of Medicine
	Emergency Medicine (Professional degree)	English	3 years	Master of Medicine
	Critical Care Medicine (Professional degree)	English	3 years	Master of Medicine
	General Medical (Professional degree)	English	3 years	Master of Medicine
	Rehabilitation and Physiotherapy (Professional degree)	English	3 years	Master of Medicine
	Surgery (Professional degree)	English	3 years	Master of Medicine
	Orthopaedics and Trannstology (Professional degree)	English	3 years	Master of Medicine
	Obstetrics and Gynecology (Professional degree)	English	3 years	Master of Medicine

School/Faculty	Program	Teaching Language	Duration	Type of degree awarded
	Ophthalmology (Professional degree)	English	3 years	Master of Medicine
	Otorhinolaryngology (Professional degree)	English	3 years	Master of Medicine
	Anesthesiology (Professional degree)	English	3 years	Master of Medicine
	Clinical Laboratory Diagnostics (Professional degree)	English	3 years	Master of Medicine
	Oncology (Professional degree)	English	3 years	Master of Medicine
	Radiation Oncology (Professional degree)	English	3 years	Master of Medicine
	Radiographic (Professional degree)	English	3 years	Master of Medicine
	Ultrasonic Medicine (Professional degree)	English	3 years	Master of Medicine
	Nursing (Professional degree)	English	3 years	Master of Medicine
	Pharmaceutical Science (Professional degree)	English	3 years	Master of Medicine



3. Doctoral Programs

School/Faculty	Program	Teaching Language	Duration	Type of degree awarded
School of Materials Science and Engineering	Materials Science and Engineering	English	4 years	Doctor of Engineering
School of Electrical Engineering	Electrical Engineering	English	3 years	Doctor of Engineering
Faculty of Electronic and Information Engineering, School of Electronic Science and Engineering	Electronic Science and Technology	English	3 years	Doctor of Engineering
Faculty of Electronic and Information Engineering, School of Computer Science and Technology	Computer Science and Technology	English	3 years	Doctor of Engineering
Faculty of Electronic and Information Engineering, School of Information and Communications Engineering	Information and Communications Engineering	English	3 years	Doctor of Engineering
School of Law	Law	English	3 years	Doctor of Law
School of Public Policy and Administration	Public Administration	English	4 years	Doctor of Management
School of Management	Management Science and Engineering	English	3 years	Doctor of Management
	Business Administration	English	3 years	Doctor of Management
School of Aerospace Engineering	Mechanics	English	3 years	Doctor of Engineering
	Aeronautical and Astronautical Science and Technology	English	3 years	Doctor of Engineering
School of Chemical Engineering and Technology	Chemical Engineering and Technology	English	4 years	Doctor of Engineering
	Power Engineering and Engineering Thermophysics	English	4 years	Doctor of Engineering
School of Mechanical Engineering	Mechanical Engineering	English	3 years	Doctor of Engineering
Jinhe Center for Economics Research	Applied Economics	English	5 years	Doctor of Economics
	Theoretical Economics	English	5 years	Doctor of Economics
School of Finance and Economics	Applied Economics	English	3 years	Doctor of Economics
	Theoretical Economics	English	3 years	Doctor of Economics

School/Faculty	Program	Teaching Language	Duration	Type of degree awarded
School of Energy and Power Engineering	Power Engineering and Engineering Thermophysics	English	3 years	Doctor of Engineering
	Nuclear Science and Technology	English	3 years	Doctor of Engineering
	Environmental Science and Engineering	English	3 years	Doctor of Engineering
Frontier Institute of Science and Technology	Chemistry	English	3 years	Doctor of Science
School of Humanities and Social Science	Philosophy Sociology	English	4 years	Doctor of Philosophy
Faculty of Electronic and Information Engineering, School of Software	Computer Science and Technology	English	4 years	Doctor of Engineering
School of Life Science and Technology	Biomedical Engineering	English	4 years	Doctor of Engineering
	Biology	English	4 years	Doctor of Science
School of Mathematics and Statistics	Mathematics	English	4 years	Doctor of Science
	Statistics	English	4 years	Doctor of Science
School of Basic Medical, Health Science Center	Physiology	English	3 years	Doctor of Medicine
	Biochemistry and Molecular Biology	English	3 years	Doctor of Medicine
	Biophysics	English	3 years	Doctor of Medicine
	Pathology and Pathophysiology	English	3 years	Doctor of Medicine
School of Public Health	Epidemiology and Health Statistics	English	3 years	Doctor of Medicine
	Child, Adolescent and Maternal Health	English	3 years	Doctor of Medicine
	Nutrition and Food Hygiene	English	3 years	Doctor of Medicine
School of Pharmacy, Health Science Center	Stomatologic Biomedicine	English	3 years	Doctor of Medicine
	Medicinal Chemistry	English	3 years	Doctor of Medicine
	Pharmaceutics	English	3 years	Doctor of Medicine
	Pharmacognosy	English	3 years	Doctor of Medicine
	Pharmaceutical Analysis	English	3 years	Doctor of Medicine
	Pharmacology	English	3 years	Doctor of Medicine
School of Medicine and Forensics	Forensic Medicine	English	3 years	Doctor of Medicine
School of Nursing, Health Science Center	Nursing	English	3 years	Doctor of Medicine

School/Faculty	Program	Teaching Language	Duration	Type of degree awarded
The First Affiliated Hospital of Xi'an Jiaotong University	Internal Medicine (Professional degree)	English	3 years	Doctor of Medicine
	Pediatrics (Professional degree)	English	3 years	Doctor of Medicine
	Neurology (Professional degree)	English	3 years	Doctor of Medicine
	Dermatology and Venereology (Professional degree)	English	3 years	Doctor of Medicine
	Emergency Medicine (Professional degree)	English	3 years	Doctor of Medicine
	General Medical (Professional degree)	English	3 years	Doctor of Medicine
	Rehabilitation and Physiotherapy (Professional degree)	English	3 years	Doctor of Medicine
	Surgery (Professional degree)	English	3 years	Doctor of Medicine
	Orthopaedics and tranmstology (Professional degree)	English	3 years	Doctor of Medicine
	Obstetrics and Gynecology (Professional degree)	English	3 years	Doctor of Medicine
	Anesthesiology (Professional degree)	English	3 years	Doctor of Medicine
	Clinical Laboratory Diagnostics (Professional degree)	English	3 years	Doctor of Medicine
	Oncology (Professional degree)	English	3 years	Doctor of Medicine
	Radiation Oncology (Professional degree)	English	3 years	Doctor of Medicine
	Radiographic (Professional degree)	English	3 years	Doctor of Medicine
	Ultrasonic Medicine (Professional degree)	English	3 years	Doctor of Medicine
	Nuclear Medicine (Professional degree)	English	3 years	Doctor of Medicine
	Stomtological Medicine (Professional degree)	English	3 years	Doctor of Medicine

School/Faculty	Program	Teaching Language	Duration	Type of degree awarded
HHospital of Stomatology	Stomtological Medicine (Professional degree)	English	3 years	Doctor of Medicine
The Second Affiliated Hospital of Xi'an Jiaotong University	Internal Medicine (Professional degree)	English	3 years	Doctor of Medicine
	Geriatric Medicine (Professional degree)	English	3 years	Doctor of Medicine
	Dermatology and Venereology (Professional degree)	English	3 years	Doctor of Medicine
	Emergency medicine (Professional degree)	English	3 years	Doctor of Medicine
	General Medical (Professional degree)	English	3 years	Doctor of Medicine
	Critical Care Medicine (Professional degree)	English	3 years	Doctor of Medicine
	Rehabilitation and Physiotherapy (Professional degree)	English	3 years	Doctor of Medicine
	Surgery (Professional degree)	English	3 years	Doctor of Medicine
	Pediatric Surgery (Professional degree)	English	3 years	Doctor of Medicine
	Orthopaedics and Tranmstology (Professional degree)	English	3 years	Doctor of Medicine
	Ophthalmology (Professional degree)	English	3 years	Doctor of Medicine
	Otorhinolaryngology (Professional degree)	English	3 years	Doctor of Medicine
	Anesthesiology (Professional degree)	English	3 years	Doctor of Medicine
	Oncology (Professional degree)	English	3 years	Doctor of Medicine
	Radiation Oncology (Professional degree)	English	3 years	Doctor of Medicine

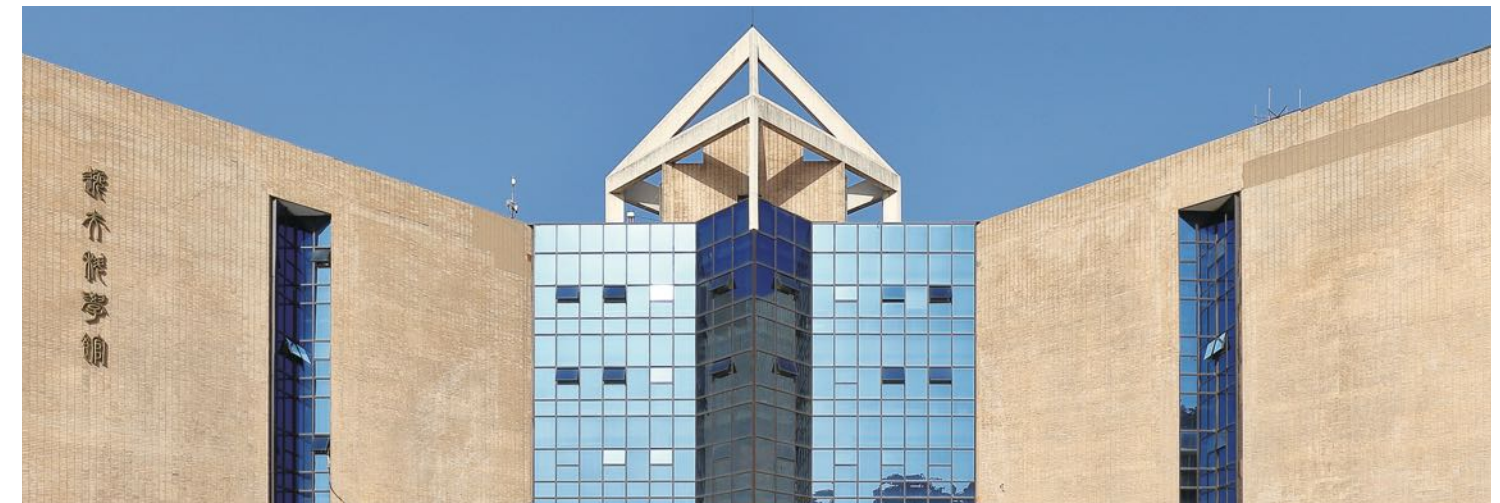
Chinese-taught Programs

1. Bachelor's Programs

School/Faculty	Program	Teaching Language	Duration	Type of degree awarded
School of Electrical Engineering	★Electrical Engineering	Chinese	4 years	Bachelor of Engineering
Faculty of Electronic and Information Engineering	Electronic Science and Technology	Chinese	4 years	Bachelor of Engineering
	★Computer Science and Technology	Chinese	4 years	Bachelor of Engineering
School of Law	Law	Chinese	4 years	Bachelor of Law
	International Economic and Trade Rules	Chinese	4 years	Bachelor of Law
School of Public Policy and Administration	★Public Administration (Electronic Government)	Chinese	4 years	Bachelor of Management
School of Management	★Big Data Management and Application	Chinese	4 years	Bachelor of Management
	★Business Administration	Chinese	4 years	Bachelor of Management
School of International Education	★Chinese Language (Business Chinese)	Chinese	4 years	Bachelor of Arts
School of Chemistry	Chemistry	Chinese	4 years	Bachelor of Science
	Applied Chemistry	Chinese	4 years	Bachelor of Science
School of Mechanical Engineering	★Mechanical Engineering (Intelligent Manufacturing)	Chinese	4 years	Bachelor of Engineering
School of Finance and Economics	★International Economics and Trade	Chinese	4 years	Bachelor of Economics
	Trade Economics	Chinese	4 years	Bachelor of Economics
	E-Commerce	Chinese	4 years	Bachelor of Economics
	Economics	Chinese	4 years	Bachelor of Economics
	Finance	Chinese	4 years	Bachelor of Economics
	Fiscal Science	Chinese	4 years	Bachelor of Economics
School of Energy and Power Engineering	★New Energy Science and Engineering	Chinese	4 years	Bachelor of Engineering
	Energy and Power Engineering	Chinese	4 years	Bachelor of Engineering
	Environmental Engineering	Chinese	4 years	Bachelor of Engineering
	Nuclear Engineering and Technology	Chinese	4 years	Bachelor of Engineering
	Energy Storage Science and Engineering	Chinese	4 years	Bachelor of Engineering

School/Faculty	Program	Teaching Language	Duration	Type of degree awarded
School of Human Settlements and Civil Engineering	Architecture	Chinese	5 years	Bachelor of Architecture
	Science and Technology of Human Settlements (Big Data & Smart City)	Chinese	4 years	Bachelor of Engineering
	Science and Technology of Human Settlements (Structure & Geotechnique Engineering)	Chinese	4 years	Bachelor of Engineering
	Science and Technology of Human Settlements (Built Environment and Energy)	Chinese	4 years	Bachelor of Engineering
School of Humanities and Social Science	Science and Technology of Human Settlements (Earth & Environment Sciences)	Chinese	4 years	Bachelor of Engineering
	Philosophy	Chinese	4 years	Bachelor of Philosophy
	Sociology	Chinese	4 years	Bachelor of Law
	Chinese Language and Literature	Chinese	4 years	Bachelor of Arts
School of Life Science and Technology	Environmental Design	Chinese	4 years	Bachelor of Arts
	Calligraphy	Chinese	4 years	Bachelor of Arts
	Biomedical Engineering	Chinese	4 years	Bachelor of Engineering
	Biotechnology	Chinese	4 years	Bachelor of Science
School of Foreign Studies	English Language and Literature	Chinese	4 years	Bachelor of Arts
	Japanese Language and Literature	Chinese	4 years	Bachelor of Arts
	French Language and Literature	Chinese	4 years	Bachelor of Arts
School of Journalism and New Media	★Network and New Media	Chinese	4 years	Bachelor of Arts

Note: ★ is the recommended program





2. Master's Programs

School/Faculty	Program	Teaching Language	Duration	Type of degree awarded
School of Materials Science and Engineering	Materials Science and Engineering	Chinese	4 years	Master of Engineering
Faculty of Electronic and Information Engineering, School of Computer Science and Technology	Computer Science and Technology	Chinese	3 years	Master of Engineering
Faculty of Electronic and Information Engineering, School of Microelectronics	Integrated Circuit Science and Engineering	Chinese	2 years	Master of Engineering
Faculty of Electronic and Information Engineering, School of Cyber Science and Engineering	Cyber Security	Chinese	3 years	Master of Engineering
School of Law	Law	Chinese	3 years	Master of Law
School of Chemistry	Chemistry	Chinese	3 years	Master of Science
	Chemical Engineering and Technology	Chinese	3 years	Master of Engineering
School of Energy and Power Engineering	Power Engineering and Engineering Thermophysics	Chinese	3 years	Master of Engineering
	Nuclear Science and Technology	Chinese	3 years	Master of Engineering
	Environmental Science and Engineering	Chinese	3 years	Master of Engineering
School of Human Settlements and Civil Engineering	Architecture	Chinese	3 years	Master of Engineering
	Architecture	Chinese	3 years	Master of Architecture (Professional degree)
	Civil Engineering	Chinese	3 years	Master of Engineering
School of Humanities and Social Science	Environment Science and Engineering	Chinese	3 years	Master of Engineering
	Journalism and Communication (Chinese Culture Studies)	Chinese	3 years	Master of Arts
	Philosophy	Chinese	3 years	Master of Philosophy
	Sociology	Chinese	3 years	Master of Law
School of Foreign Studies	Journalism and Communication	Chinese	3 years	Master of Arts
	Design Studies	Chinese	3 years	Master of Arts
	International Chinese Language Education	Chinese	3 years	Master of Arts
School of Physics	Physics	Chinese	3 years	Master of Science
	Materials Science and Engineering	Chinese	3 years	Master of Engineering
School of Journalism and New Media	Journalism and Communication	Chinese	3 years	Master of Arts
Frontier Institute of Science and Technology	Materials Science and Engineering	Chinese	3 years	Master of Engineering



3. Doctoral Programs

School/Faculty	Program	Teaching Language	Duration	Type of degree awarded
School of Materials Science and Engineering	Materials Science and Engineering	Chinese	5 years	Doctor of Engineering
Faculty of Electronic and Information Engineering, School of Computer Science and Technology	Computer Science and Technology	Chinese	3 years	Doctor of Engineering
Faculty of Electronic and Information Engineering, School of Microelectronics	Integrated Circuit Science and Engineering	Chinese	3 years	Doctor of Engineering
Faculty of Electronic and Information Engineering, School of Cyber Science and Engineering	Cyber Security	Chinese	3 years	Doctor of Engineering
School of Law	Law	Chinese	3 years	Doctor of Law
School of Chemistry	Chemistry	Chinese	3 years	Doctor of Science
School of Energy and Power Engineering	Power Engineering and Engineering Thermophysics	Chinese	3 years	Doctor of Engineering
	Nuclear Science and Technology	Chinese	3 years	Doctor of Engineering
	Environmental Science and Engineering	Chinese	3 years	Doctor of Engineering
Frontier Institute of Science and Technology	Biomedical Engineering	Chinese	3 years	Doctor of Engineering
	Materials Science and Engineering	Chinese	3 years	Doctor of Engineering
	Chemistry	Chinese	3 years	Doctor of Science
	Organic Chemistry	Chinese	3 years	Doctor of Science
School of Human Settlements and Civil Engineering	Earth and Human Settlements Science and Engineering	Chinese	3 years	Doctor of Engineering
	Civil Engineering	Chinese	3 years	Doctor of Engineering
	Environment Science and Engineering	Chinese	3 years	Doctor of Engineering
School of Humanities and Social Science	Philosophy	Chinese	4 years	Doctor of Philosophy
	Sociology	Chinese	4 years	Doctor of Law
Faculty of Electronic and Information Engineering, School of Software	Computer Science and Technology	Chinese	4 years	Doctor of Engineering
School of Mathematics and Statistics	Mathematics	Chinese	4 years	Doctor of Science
	Statistics	Chinese	4 years	Doctor of Science
School of Foreign Studies	Systemic Studies of Language and Culture	Chinese	3 years	Doctor of Philosophy/ Management/Engineering
	Foreign Languages and Literatures	Chinese	3 years	Doctor of Linguistics
School of Physics	Physics	Chinese	4 years	Doctor of Science
	Materials Science and Engineering	Chinese	4 years	Doctor of Engineering
School of Journalism and New Media	New Media and Social Governance	Chinese	3 years	Doctor of Law



Chinese Language Program

Program Introduction:

The program provides courses for international students to learn Chinese language and culture.

Course Level:

Starter, Intermediate, Junior, Senior
(The university will organize placement test after enrollment and guide the students to choose the corresponding course level.)

Duration:

1 Semester, 1 Year
(New semester starts in March and September)

Major Courses

- > Compulsory Course: Intensive Chinese Reading, Spoken Chinese, Chinese Listening, Chinese Reading and Chinese Writing.
- > Selective Course: Chinese Character Writing, Chinese Orthography, Calligraphy, Chinese Painting, Paper-Cutting Art, Chinese Folk Songs, Tai Ji, Business Chinese, Chinese Poetry, Ancient Literature, Modern and Contemporary Literature, History and Development of Chinese Characters, Appreciation of Film and Television, and Selection of Idioms, etc.

Visiting Scholar Program

Program Introduction:

It provides a short or long-term visiting opportunity for international students to study or conduct research in the specific academic field at XJTU. No degree is conferred by XJTU. Those international students who have graduated from high school or above apply for the program are called General Visiting Students. Those who obtained a master's degree or above are called Senior Visiting Scholar.

Courses:

Generally, all the courses of the degree programs listed in Part II are open for eligible international students to select. It is required to contact with the professor in advance for course or program selection.

Study Duration:

It is jointly decided by professor and student according to the courses they choose or the research they will conduct.

Exchanging Students Program

Program Introduction:

XJTU receives exchanging students to study or conduct research in accordance with the student exchange agreements signed between XJTU and overseas universities. The exchanging students can obtain some recognized credits according to the agreements.

Courses:

Generally, all the courses of the degree programs are open for eligible international students to select. The specific courses should be determined according to the signed agreement.

Study Duration:

The specific study period will be given in the agreement, which is usually one semester or one academic year.

International Foundation Program

Program Introduction:

International Foundation Program aims to provide international high school graduates courses of Chinese language, culture, mathematics, physics, economics etc, to allow them to have a good preparation for studying degree program at XJTU by developing their pragmatic ability in Chinese language, their skills of doing research and study in Chinese universities, career-oriented competitiveness as well as cross-cultural adaptability.

XJTU Foundation Program Center offers International Foundation Programs (11/18/36 weeks) to high school and equivalent level graduates to help them matriculate to high level universities.



XJTU Foundation Program Center offers "1+4" Foundation-Bachelor Program (11/18/36 weeks) for outstanding high school and equivalent level graduates to further optimize their knowledge structure and to gain the strength to get better scholarships. Applicants will be informed of their eligibility for undergraduate studies and scholarship types through a comprehensive review prior to their Foundation Program. Only students who reached at least 4th level of HSK after foundation study will be admitted directly to undergraduate studies after the program without another review and interview (with a proper achievement which meets the requirements of scholarship). Students who could not reach 4th level of HSK will be disqualified of bachelor study.

In the meantime, XJTU Foundation Program Center cooperates with the government departments of major student source countries to customize pre-graduate and undergraduate talent development programs.

Courses:

General Chinese, Chinese for Special Purpose, Culture and Study Skills, Mathematics, Economics and Business, Physics, etc.

Study Duration:

Students may select 11 weeks, 18 weeks or 36 weeks course based on their own proficiency in Chinese language and basic subjects' knowledge in high school.
(11 weeks course starts in May, 18 weeks course starts in April, and 36 weeks course starts in September) .

Summer Schools

1. University Alliance of the Silk Road (UASR) Summer Camp

Introduction:

The program conducts in Chinese, English, and Russian. It aims to promote academic and people to people communications among member universities of UASR as well as countries along the Belt & Road.

Potential Participants:

Teachers, students and other scholars from member universities of UASR and countries along the Belt & Road.

Courses:

- > Meditative Chinese language teaching;
- > Seminars and lectures with experts, scholars, and students from specific academic fields.
- > Communication with Chinese and international students of XJTU to experience the study environment.

Time:

July (Usually seven to ten days)

Way to Application:

Submit documents at XJTU online application system.

2. Customized Summer Camp

Customized summer camp is specially designed for universities or organizations who are planning to study or visiting XJTU. Program time, schedule, budget will be jointly decided by the two parties.

SCHOLARSHIPS

Chinese Government Scholarships

In order to promote the mutual understanding, cooperation and exchanges in various fields with other countries and organizations like UNESCO, EU, ASEAN University Network, World Meteorological Organization, Pacific Islands Forum etc., the Chinese government has set up a series of scholarship programs to sponsor international students, teachers and scholars to study and conduct research in Chinese universities. Xi'an Jiaotong University is one of the designated universities to receive and educate international students under CSC.

1. Chinese University Program

Supporting Categories:

This scholarship supports graduate students (Master and PhD).

Scholarship Coverage:

It provides a full scholarship which covers tuition waiver, accommodation, stipend, and comprehensive medical insurance.
Stipend: Master 3000RMB/Month; PhD 3500RMB/Month

Way to Application:

Submit application online to both China Scholarship Council (CSC) and XJTU.



Application Time:

From November to April next year.

Eligibility:

- Non-Chinese citizens with valid ordinary passports and be in good health;
- Applicants for Master's degree must have a Bachelor's degree and be under 35 years of age;
Applicants for Doctoral degree must have a Master's degree and be under 40 years of age;

NOTES: Please refer to the website of School of International Education of XJTU at <http://sie.xjtu.edu.cn/> for detailed and updated information.

2. Bilateral/Great Wall/EU/AUN etc Programs

Supporting Categories:

It supports bachelors, master's and doctoral studies, as well as general visiting and senior visiting scholars

Scholarship Coverage:

Full scholarship and partial scholarship

Way to Application:

Submit application to the dispatching authorities for overseas study of their home countries, secretariats of UNESCO/ EU/AUN etc.

Application Time :

Generally from January to April next year. Please refer to the official website of dispatching authorities or secretariats of organizations for specific dates.

NOTES: Please refer to the website of China Scholarship Council at <http://www.campuschina.org/scholarships/> for detailed and updated information.

MOFCOM Scholarship

MOFCOM Scholarship is set up by Ministry of Commerce of People's Republic of China to further strengthen the communication and cooperation between China and other countries as well as to develop talents for developing countries.

Supporting categories, duration of scholarship and instruction language:

MOFCOM Scholarship supports Master's program for 2-3 years or PhD program for 3 years. Scholarship winners must register for English-taught program.

Scholarship Coverage:

1. Students are exempt from tuition fee, teaching material fee, research and survey fee, allowance of English-taught program, dissertation guidance fee;
2. Free on-campus accommodation;
3. Monthly stipend: 36000RMB per year per master student, 42000RMB per year per PhD student;

4. One-off resettlement fee: 3000RMB per person;
5. Free medical insurance for international students;
6. One-time round-trip international airfare for all the students (First time fly to China after enrollment, and Fly back to home country while graduation), and a maximum of "n-1" ("n" is for the length of schooling year which is set while the student was enrolled by the program, "n" is less than or equal to three) round-trip international airfares for home visits (one time per year set at the end of an academic year);
7. The annual review is compulsory for all students. Those who pass the review may continue to enjoy full scholarships in the next year.
8. Other expenses shall be managed and used by the Ministry of Commerce or the universities as a whole and shall not be distributed to students. The Ministry of Commerce only provides students with financial assistance within their enrolled academic duration. Students who postpone their graduation will not receive the continuing sponsorship.



Where to Apply:

The Economic and Commercial Counselor's Office (ECCO) of the Chinese Embassy in your country.

Eligibility:

To be eligible, applicants must:

- be a citizen of a developing country other than the People's Republic of China, and under the age of 45;
- be healthy physically and mentally with a physical examination report issued by a local public hospital, and not having any disease or situation listed below:
 - a) Diseases prohibited by Chinese Entry-Exit Inspection and Quarantine Laws and Regulations
 - b) Other severe chronic diseases like high blood pressure, cardio-cerebrovascular disease, diabetes; psychological diseases; or other infectious diseases which may harm public health
 - c) In recovery period after major surgery or acute disease attacks
 - d) Severe physically challenged
 - e) Pregnancy
- with at least three years' working experience;
- be a bachelor's degree holder when applying for master's program & be a master's degree holder when applying for doctoral program;
- be incumbents with a relevant educational background or working experience to the applied program are preferred;
- be public officials of division level and above (or corresponding level) in government sectors, or senior management staff of organizations and enterprises, or academic backbones of universities and research institutions;
- be sufficient in English which meets the academic requirements of the program, be equivalent to IELTS 6.0 or TOEFL 80 and above level;
- be with the potential of professional development, and is committed to promoting the friendly exchanges and cooperation between the host country and China;
- be neither studying in China nor being admitted to other scholarship programs provided by Chinese government.

NOTES: Please refer to the website of China Scholarship Council at <http://www.campuschina.org/scholarships/> for detailed and updated information.



International Chinese Language Teachers Scholarship

For the purpose of satisfying the growing demand of the international community for Chinese language teachers and facilitating Chinese language education in other countries, the Center for Language Education and Cooperation (CLEC) will continue with the International Chinese Language Teachers Scholarship. Authorized by CLEC, Xi'an Jiaotong University has launched International Chinese Language Teachers Scholarship program to recruit eligible international students and Chinese language teachers to study Chinese Language.

Target applicants

1. Non-Chinese citizens.
2. Be in good health with outstanding learning performance and morality.
3. Be committed to the Chinese language education and related work.
4. be between 16 to 35 years old (before Sep.1 of the entry year). On-duty Chinese language teacher can be extended to 45 years old.

Categories:

One-Academic-Year Learning Program, One-Semester Learning Program, Four-week Learning Program.

Majors:

Chinese language and literature, Chinese language, Chinese language+ home stay/visit, etc.

Scholarship Coverage and Criteria:

International Chinese Language Teachers Scholarship covers tuition, accommodation, monthly living allowance (exclude four-week program students) and comprehensive insurance. Monthly living allowance for students of One-Academic-Year Learning Program and One-Semester Learning Program is 2500 RMB.

Application Procedures:

Applicants can log in to the International Chinese Language Teachers Scholarship application website at <http://cis.chinese.cn> for application since March 1st every year.

NOTES: Please refer to the website of School of International Education of XJTU at <http://sie.xjtu.edu.cn/> for detailed and updated information.



XJTU-Xi'an City Government Belt & Road Scholarship

XJTU-Xi'an City Government Belt & Road Scholarship is jointly founded by Xi'an Municipal Government and Xi'an Jiaotong University. The city government provides scholarship while the university covers some tuition fees. The scholarship is offered to students from One Belt & One Road countries to study in Xi'an Jiaotong University.

Supporting Category:

Bachelor, Master, Doctoral and six months or above non-degree program students.

Scholarship Coverage:

Bachelor: RMB 15000 per year

Master: RMB 20000 per year

PhD: RMB 25000 per year

Non-degree program students for studying six to ten months: RMB 1000 per month.

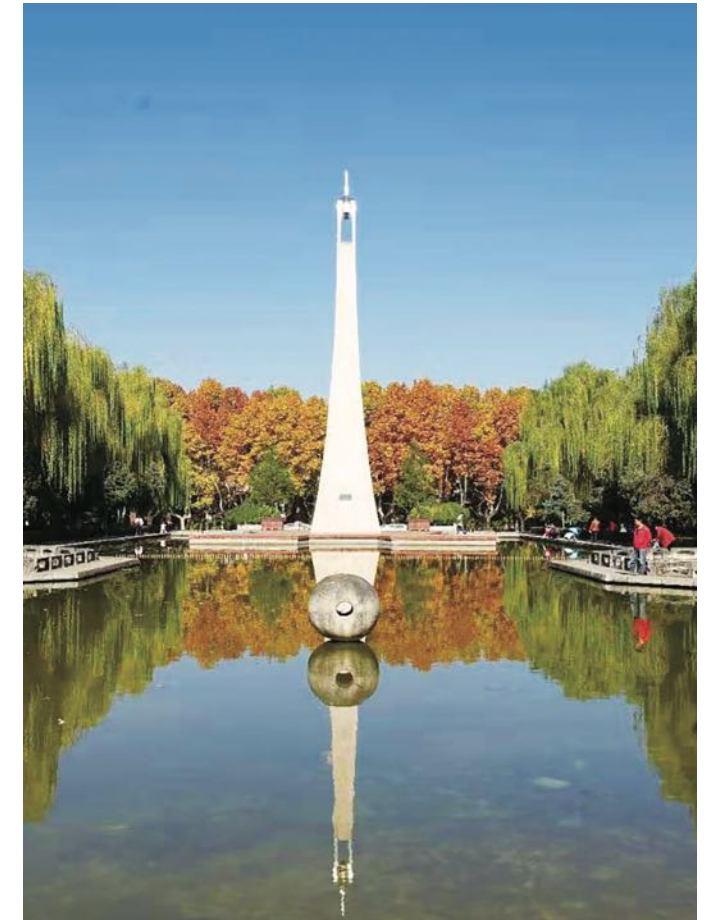
Xi'an Jiaotong University will provide tuition fee discount depending on the circumstances.

Deadline for application:

June 30th, 2024

Eligibility:

- 1) Citizen of a country along the Belt and Road
- 2) Degree and Age Requirement:
Bachelor degree applicants must have high school graduation certificate and be under the age of 25;
Master degree applicants must have bachelor degree and be under the age of 35;
Doctoral degree applicants must have Master degree and be under the age of 40;
Non-degree program applicants must be under the age of 45.
- 3) This program does not support students who already have other type of scholarship.
- 4) Language Requirement: Chinese Language should be at HSK4 and above.



Way to application:

Submit application online directly to XJTU.

Application Time:

November to June next year for non-degree and bachelor programs; November to April next year for master and doctoral programs.

NOTES:

1. Those who apply for studying master and doctoral programs should submit application following the date and requirements for Chinese Government Scholarship—Chinese University Program.
2. For bachelor and non-degree program application, please refer to the website of School of International Education of XJTU at <http://sie.xjtu.edu.cn/> for detailed and updated information.

XJTU Siyuan International Student Scholarship

To promote the opening up of higher education and build a global science and education center in China's west, the university sets up Siyuan International Student Scholarship by supporting outstanding international students to pursue their degree at XJTU.

Supporting Category:

Bachelor, Master, Doctoral program students.

Scholarship Coverage:

Exemption from tuition fee; providing monthly stipend (12 months per year) which is as follows:

First Prize: 4500RMB/person/month for doctor student, 3500RMB/person/month for master student, 800RMB/person/month for bachelor student.

Second Prize: 3000RMB/person/month for doctor student, 2500RMB/person/month for master student, 500RMB/person/month for bachelor student.

Third Prize: 1700RMB/person/month for both doctor and master students.

Application Time:

November to June next year for bachelor programs; November to April next year for master and doctoral programs.

Way to Application:

Submit application online directly to XJTU.

NOTES: Those who apply for studying master and doctoral programs should submit application following the requirements for Chinese Government Scholarship—Chinese University Program. **It is invalid to submit application only for Siyuan International Student Scholarship.**

XI'AN—UCLG ASPAC Scholarship

In order to promote in-depth cooperation and exchanges in the field of education between Xi'an and UCLG members in the Asia-Pacific region, Xi'an municipal government has established the XI'AN—UCLG ASPAC Scholarship to support universities in Xi'an to carry out master and doctoral education for member cities, and to strengthen human resource capacity building. Xi'an Jiaotong University has been selected to undertake this program.

Supporting Category:

This scholarship supports undergraduate students and graduate students (Master and PhD).

Scholarship Coverage:

The scholarship covers tuition fee, accommodation fee, stipend (2000 RMB/Month, 12 months a year), comprehensive medical insurance in China, and application fee.

The scholarship is provided to students within their enrolled academic duration. PhD students who postpone their graduation will receive the continuing sponsorship for no more than one year.

Way to Application:

Applicants shall submit application both to UCLG ASPAC and XJTU.
Application to UCLG ASPAC: scholarship.recruitment@uclg-aspac.org
Application to XJTU: Log in XJTU's online application system to fill required information and upload the documents.

Application Time:

From November to April next year.

Eligibility:

- Non-Chinese citizens with valid ordinary passports and be in good health;
- Applicants for Master's degree must have a Bachelor's degree and be under 35 years of age; Applicants for Doctoral degree must have a Master's degree and be under 40 years of age;
- Civil servants in the government sectors of the home country.

NOTES: Please refer to the website of School of International Education of XJTU at <http://sie.xjtu.edu.cn/> for detailed and updated information.

Other Scholarships

1. XJTU-VTP Group Education Fund Scholarship

The scholarship is founded by VTP Group Education Fund to support outstanding Vietnamese student to study at XJTU. The scholarship covers tuition fee, accommodation, comprehensive medical insurance in China and monthly living allowance. Students should submit application directly to VTP Group for evaluation. XJTU will give the final review for admissions.

2. Shaanxi Sanqin International Student Scholarship

The scholarship is set up by Shaanxi Provincial Government to encourage the on-campus self-sponsored full time degree international students to promote their academic excellence. It's a one-off scholarship.

The scholarship is 25000RMB for doctoral student, 20000RMB for master student, 13000RMB for bachelor student. Please pay attention to the application notice from School of International Education after you arrived at the university.

3. XJTU International Student Commendation Award

The award was established by XJTU to encourage and support outstanding full time degree international students to promote their academic qualifications. It's a one-off scholarship. The first prize of outstanding international student: Certificate + 2000 RMB/person.

The second prize of outstanding international student: Certificate + 1500 RMB/person.

The third prize of international outstanding student: Certificate + 1000 RMB/person.

Excellent international student leaders: Certificate + 1000 RMB/person.

Individual awards (1. Academic research award, 2. Innovation and entrepreneurship award, 3. Culture and art award, 4. Sports spirit award, 5. Practical service award, 6. Friendship messenger award): Certificate + 600 RMB/person.

Students that are active in extracurricular activities: Certificate + 400 RMB/person.

Please pay attention to the application notice from School of International Education after you arrived at the university.



FEES

The amount of fees in accordance with: 国教外来 [1998] 7号、国办发 [2018] 82号

Accommodation Fee

There are three campuses providing accommodation for international students, namely Xingqing Campus, Yanta Campus and iHarbour Campus. The university will arrange which campuses host international students according to the accommodation policy of that year. Students are required to book the room online according to the policy.



Xingqing Campus

Unit: Rmb/Person/Year

Room Type	Fees Standard	Per Day	Half Year	One Year
Single Room	First time	100	11,000	19,000
	Renew	100	10,000	18,000
Double Room	First time	80	7,000	11,000
	Renew	80	6,000	10,000
Four-bed Room	First time	40	4,000	6,000
	Renew	40	3,000	5,000

Yanta Campus (South and North Building)

Unit: Rmb/Person/Year

Room Type	Fees Standard	Per Day	Half Year	One Year
Single Room	First time	100	10,000	18,000
	Renew	100	9,000	17,000
Double Room	First time	80	6,000	9,000
	Renew	80	5,000	8,000

Yanta Campus (Middle Building)

Unit: Rmb/Person/Year

Room Type	Fees Standard	Per Day	Half Year	One Year
Double Room	First time	80	6,000	9,000
	Renew	80	5,000	8,000
Single Room A	First time	100	8,000	14,000
	Renew	100	7,000	13,000
Single Room B	First time	100	7,000	13,000
	Renew	100	6,000	12,000
Single Room C	First time	100	7,000	12,000
	Renew	100	6,000	11,000

Yanta Campus (Economics and Finance Building)

Unit: Rmb/Person/Year

Room Type	Fees Standard	Per Day	Half Year	One Year
Single Room	First time	100	11,000	19,000
	Renew	100	10,000	18,000
Double Room	First time	80	6,000	10,000
	Renew	80	5,000	9,000

iHarbour Campus

Unit: Rmb/Person/Year

Room Type	Fees Standard	Per Day	Half Year	One Year
Single Room	First time	50	5,500	9,000
	Renew	50	4,500	8,000

Tuition Fees Chart

A. Chinese-taught Programs

Unit: Rmb/Academic Year

	Science & Engineering	Business\Economics\ Humanities	Arts	Medicine
Bachelor	22,000	20,000		40,000
Master	34,000	30,000		50,000
Doctor	40,000	34,000		50,000

B. English-taught Programs

Unit: Rmb/Academic Year

	Science & Engineering	Business\Economics\ Humanities	Arts Clinical Medicine	Dental Surgery	Pharmacy
Bachelor	30,000	26,000	40,000	50,000	30,000
Master	39,000	30,000	50,000	50,000	30,000
Doctor	44,000	34,000	50,000	50,000	30,000

C. Chinese language Programs

Unit:Rmb

Item	1 Semester	1 Year
Tuition fee	8000	15000

D. Foundation Programs

Unit:Rmb

Discipline Category	36 Week Courses	18 Weeks Courses	11 Weeks Courses
Humanities	25,800	13,800	8800
Business	25,800	13,800	8800
Science & Engineering	25,800	13,800	8800

Application fee

- A. Scholarship Programs: 800Rmb/Person
- B. Self-funded Programs: 500Rmb/Person

Ways to Pay Fees

Way 1: Online payment: Union Pay Card, Wechat, Alipay.
 Way 2: Offline payment: Cash, Union Pay Card, Bank Transfer
 (If you pay by wire transfer, please keep the receipt for showing to us when you register at the university).

Other Fees You Have to Know

1. Every international student studying at XJTU must buy insurance. The insurance fee is 800 yuan per year.
2. After arrived at XJTU, if you need to apply for Residence Permit, you have to pay for 400 yuan for one year, 800 yuan for two years and 1000 yuan for three years or above to the local police.
3. Physical examination report is required for applying for Residence Permit in China. Please bring all your materials if you have already taken physical examination in your country. The fee for medical examination or verification in China is about 400 yuan.
4. Self-sponsored students have to pay for registration fee 400rmb per academic year along with tuition fee.
5. Please refer to your admission notice to confirm which fees have been covered in your scholarship and which are left for yourself to pay.

University Account Information



Account Name:
XI'AN JIAOTONG UNIVERSITY

Account Number:
Dollar: 103600215153
Euro: 102400215168
Yen: 102000215162

Bank of Deposit:
Bank of China Shaanxi Branch Xi'an,
Xi'an Jiada Sub-Branch

Swift Code:
BKCHCNBJ620



CAMPUS LIFE

Study at XJTU



ANTONIO

Hello! I'm Antonio from Cape Verde. Study in China is one of the best choices I've ever made. I chose to pursue my master's degree in mechanical engineering at XJTU. Here, I work with international student and professor teams, conduct research at national best labs, learn to use the most advanced technologies.



KETRIN

Greetings! I am Ketrin from Indonesia. Now, I am pursuing my Master's degree at XJTU in Applied Economics. Two main reasons why I chose XJTU are: First, its prestigious reputation. Being one of the members of China's Ivy League, XJTU provides the platform where we can grow academically, personally, and professionally while discovering our potential and passion in us. Second, its location. XJTU is located in Xi'an city, the starting point of the ancient Silk Road. When you reach here, you will realize that this city is a melting pot of rich cultural heritage and modern vibrancy. Here, we learn, enjoy, flow, and grow! Welcome to apply to XJTU!





Life in Xi'an

NICOLA

I've been in XJTU for three years. I'm going to graduate next year. Xi'an, for me, is the ideal city for study, not only because of its best university XJTU, but also the city itself. It is a city that allows you to study in a peaceful mind as well as to let you go to your hearts content.

It develops fast in recent years with skyscrapers and traditional architecture stands together while the living cost is around 2000RMB a month which is quite cheaper than that of coastal cities. Xi'an is one of China's transportation hub with metros, bullet trains and domestic and international flights. By flights, you may travel to 80% of Chinese cities within 2 hours. It's perfect for me to travel.



One of my best memories is to idle along the City Wall on weekends, chat with the locals, listen to their stories of history, and learn local traditions and dialects. They are so proud of their culture which makes the city inclusive. A good example is the food. Local noodles, Muslim shashlik, Italian pasta, French Fries, hamburger etc exist in harmony in the restaurant and people from other countries find there cozy living here. I would never say goodbye to my XJTU, my Xi'an.



APPLICATION INFORMATION

Application Procedure

Applications for XJTU are all online. Offline documents are unacceptable. The application procedure is as follows:

Step 1

Online application at CSC website at <http://www.campuschina.org/>. Download the completed Application Form for Chinese Government Scholarship, print and sign your name.

Program Type: B

Agency No.: 10698

(This step is for Chinese Government Scholarship ---Chinese University Programs, postgraduate studies for XJTU-Xi'an City Government Scholarship as well as postgraduate studies for XJTU Siyuan Scholarship. Other programs start from step 2)



Step 2

Online application at Xi'an Jiaotong University's International student application system at <http://isso.xjtu.edu.cn/recruit/login>

Step 3

Pay the application fee. (The university will send payment notice for application through system information/email to those who pass the initial review.)

Step 4

Application complete. Students should pay close attention to the application system and registered email; follow up the latest information such as academic review, pre-admission review, tuition payment and acceptance information, etc.



Documents and Time Schedule

All documents must be complete, true, and correct in either Chinese or English.

- Application Form for Chinese Government Scholarship**
Downloaded after online application in CSC system.
- XJTU Application Form for International Students**
Automatically formed after online application in XJTU system.
- Completed Original Physical Examination Record for Foreigners and Blood Test Report**
The physical examination must cover ALL the items listed in the form. (Download at <http://sie.xjtu.edu.cn/en/2.pdf> and fill in Chinese or English.) The forms with incomplete records or without the suggestion and signature of the attending physician, official cross-edge stamp of the hospital or a sealed photograph of the applicant are invalid. Please select the appropriate time to take physical examination as the result is valid for only 6 months.
- Original Non-criminal Record**
- Original Highest Diploma and its Notarized Copies**
(Prospective diploma winners must submit official certificate from their current university/school.)
- Original transcripts in the latest study period, such as high school, undergraduate or graduate period ones and their notarized copies.**
- Recommendation Letters**
Bachelor program: One original recommendation letter from principal or teacher.
Postgraduate program: Two original recommendation letters written by professors or associate professors. If applicants have already got provisional acceptance from professors at XJTU, please provide Xi'an Jiaotong University Recommendation Letter from Potential Supervisor as one of the two recommendation letters. The format can be downloaded at <http://sie.xjtu.edu.cn/sqclxz1.htm>.
Special Attention for PHD applicants:
Some schools require Recommendation Letter from Potential Supervisor. Please check the list online and the information of

professors.

Degree Programs:

<https://sie.xjtu.edu.cn/zsxm/xxlm/bs.htm>

Professors information:

<https://sie.xjtu.edu.cn/yxxx/dsxx.htm>

- A Study Plan or Research Proposal**
Applicants must submit a written study plan or research proposal in English or Chinese, with a minimum of 600 words for Bachelor program, 800 words for Master program and 1500 words for Doctoral program.
- Research Achievements**
Applicants may submit published research papers, award certificates or other documents to prove their achievement and ability in academic research if any.
- Certificate of Language Proficiency**
Chinese-taught programs: Report of HSK 4 180 points and above. Other language proficiency certificate is also acceptable upon approved by XJTU.
English-taught programs: Transcript of IELTS 6.0 and above, TOEFL 80 and above. Other language proficiency certificate is also acceptable upon approved by XJTU.
- Photocopy of Valid Ordinary Passport**
- Acceptance Letter for Non-degree Students**
This is only for visiting scholarship program. Please download the form at <http://sie.xjtu.edu.cn/sqclxz1.htm> at website of School of International Education and contact the professor for acceptance and filling the form.

NOTES:

- No application documents mentioned above will be returned whether the application is successful or not.
- Incomplete Applications will be rejected.
- Notarized Chinese/English versions are required for documents with languages other than the two.
- During the review process, the school may require students to submit other materials if needed.

Serial NO.	Programs	Supporting Categories	Application Time	Required Documents	Application links
1	MOFCOM & CSC-Bilateral /Great Wall/EU/AUN etc	Visiting Scholar/ Bachelor/ Master/ Doctoral students	Check CSC and dispatching authorities' websites	1-11 and others	http://www.campuschina.org/ and other websites
2	XJTU Siyuan Scholarship	Bachelor	November 2023 to June 2024	2-11	http://isso.xjtu.edu.cn/recruit/login
		Master/ Doctoral students	November 2023 to April 2024	1-11	Step1: CSC: http://www.campuschina.org/ Step2: XJTU: http://isso.xjtu.edu.cn/recruit/login
3	CSC-Chinese University	Master/ Doctoral students			http://isso.xjtu.edu.cn/recruit/login
4	XJTU-Xi'an City Government Belt & Road Scholarship	Master/ Doctoral students			
		Bachelor students	November 2023 to June 2024	2-11	http://isso.xjtu.edu.cn/recruit/login
		Chinese Language students	Spring enrollment: November 2023 to January 2024 Autumn enrollment: March 2024 to June 2024	2、 3、 4、 11 2-12	
5	International Chinese Language Teachers Scholarship	Chinese language students	Start from March 1	2,3,4,11 and others	Step1: http://cis.chinese.cn Step2: http://isso.xjtu.edu.cn/recruit/login
	International Chinese Language Teachers Scholarship Online Program				
6	XI'AN—UCLG ASPAC Scholarship	Master/ Doctoral students	November 2023 to April 2024	2-11 and the others	Step1: scholarship.recruitment@uclg-aspac.org Step2: http://isso.xjtu.edu.cn/recruit/login
7	Self-sponsored	Bachelor students	November 2023 to June 2024	2-11	http://isso.xjtu.edu.cn/recruit/login
		Master/ Doctoral students			
		Chinese Language students	Spring enrollment: November 2023 to January 2024 Autumn enrollment: March 2024 to June 2024	2、 3、 4、 11 2-12	
		Visiting Scholar			
	UASR Summer Camp		July	2、 3、 4、 11	
8	XJTU-VTP Group Education Fund	Bachelor students	November 2023 to June 2024	2-11 and others	Step1: Offline documents submitting to VTP Step2: Online application at: http://isso.xjtu.edu.cn/recruit/login

CONTACT US

Xingqing Campus
Admission Office for International Students,
Room A922/907, Foreign Study Building, School of
International Education,
Xi'an Jiaotong University,
No.28, Xianning West Road,
Xi'an, Shaanxi, 710049, P.R. China

**Western China Science & Technology Innovation
Harbour, Iharbour**
Office 1-2096, Building 1, School of International
Education, Xi'an Jiaotong University

Yanta Campus
International Student Affairs Office,
School of International Education, Xi'an Jiaotong
University,
No.76, Yanta West Road,
Xi'an, Shaanxi, 710061, P.R.China

e-mail: adm-sie@mail.xjtu.edu.cn
mbbs-adm@mail.xjtu.edu.cn

Online application system:
<http://isso.xjtu.edu.cn/recruit/login>

Wechat ID:
studyatxjtu



Website:
<http://sie.xjtu.edu.cn>



Instagram



Facebook

